

© copyright
Copyright of this drawing is retained by ABA surveys. Any discrepancies between this drawing and any other information should be reported to ABA surveys.

Drawing Naming Convention:
Job No\Code\Dwg type\Location\Ref
Code: 13 = Existing 14 = Proposed
Dwg Type: B = Building E = Elevation
S = Section T = Topographical
Location: B = Basement C = Ceiling Plan
E = External F = Front
G = Ground S = Side
I = First R = Rear
R = Roof GA = General Layout
M = Mezzanine AA = Section A-A
Ref Ref to individual dwg I.D. (e.g. Revision)

Standard Abbreviations (where applicable):

AB AIR BRICK	HT HEATER
ACU AIR CONDITIONING UNIT	HWT HOT WATER TANK
AH ACCESS HATCH	HYD FIRE HYDRANT
AP ACCESS PANEL	IC INSPECTION COVER
AV AIR VALVE	IL INVERT LEVEL
B BOLLARD	IR IRON RAILINGS
BB BELLSIA BRACON	KO KERB OUTLET
BE BEAM HT	LP LAMP POST
BT BT COVER	MH MANHOLE
BR BOILER	MKR MARKER POST
BSL BEAM SOFFIT LEVEL	P POST
B/W BARBED WIRE	PI PIPE
CATV CABLE TV COVER	PM PARKING METER
CB CUPBOARD	PR PLOT RATIO
C/B CLOSE BOARDED	RAD RADIATOR
CC CEILING CHANGE	RE RECESS HEAD HEIGHT
CHI CLEAR INTERNAL HT	RFV RAISED FLOOR VOID
C-H CILL TO HEAD HT	RO RODDING EYE
CL COVER LEVEL	RS ROLLER SHUTTER
C/L CHAIN LINK	RWP RAIN WATER PIPE
C/P CHESTNUT PALING	SA SITE AREA
DB DOOR BASE HT	SC STOP COCK
DH DOOR HEAD HT	SI SIGN
DR DRAIN	SL SOFFIT LEVEL
ELEC ELECTRIC COVER	ST STOP TAP
EP ELECTRIC POLE	STMP TREE STUMP
ER EARTH ROD	SWP SOIL VENT PIPE
EXP EXTRACTOR FAN	SV STOP VALVE
FA FIRE ALARM	SW STORM WATER
FL FLOOD LIGHT	TCSU TCSU COVER
F-C FLOOR TO CILL HT	TELE TELECOMMS COVER
F-H FLOOR TO HEAD HT	TL TRAFFIC LIGHT
F-S FLOOR TO SPRING HT	TP TELEGRAPH POLE
F-A FLOOR TO APEX HT	UTL UNABLE TO LOCATE
FW FOUL WATER	UTR UNABLE TO RAISE
GEA GROSS EXTERNAL AREA	V VENT
GIA GROSS INTERNAL AREA	VP VENT PIPE
GSA GROSS SITE AREA	WA WARDROBE
GU GULLY	WM WATER METER
GV GAS VALVE	WT WATER TAP

Symbols (where applicable):

	MASONRY WALL
	NON-MASONRY WALL
	FLOOR TO STRUCTURAL CEILING HT
	FLOOR TO SUSPENDED CEILING HT
	FLOOR LEVEL RELATIVE TO DATUM

Notes:
The Survey has been computed on an arbitrary grid.
All Levels are in metres and relate to an arbitrary site datum.
Station XI. Value 10.000m.
All direction arrows indicate UP unless otherwise stated.
Drainage pipe sizes (where shown) have been gauged from the surface (for safety reasons) and should be regarded as approximate only.
Visible features in the vicinity of any boundaries, as shown on this survey, may not represent the extent of legally conveyed ownership.
Whilst every effort has been made to determine wall materials, no guarantee is given. Materials should be regarded as assumed unless verified by a qualified third party.

Rev	Date	By	Description

Client:

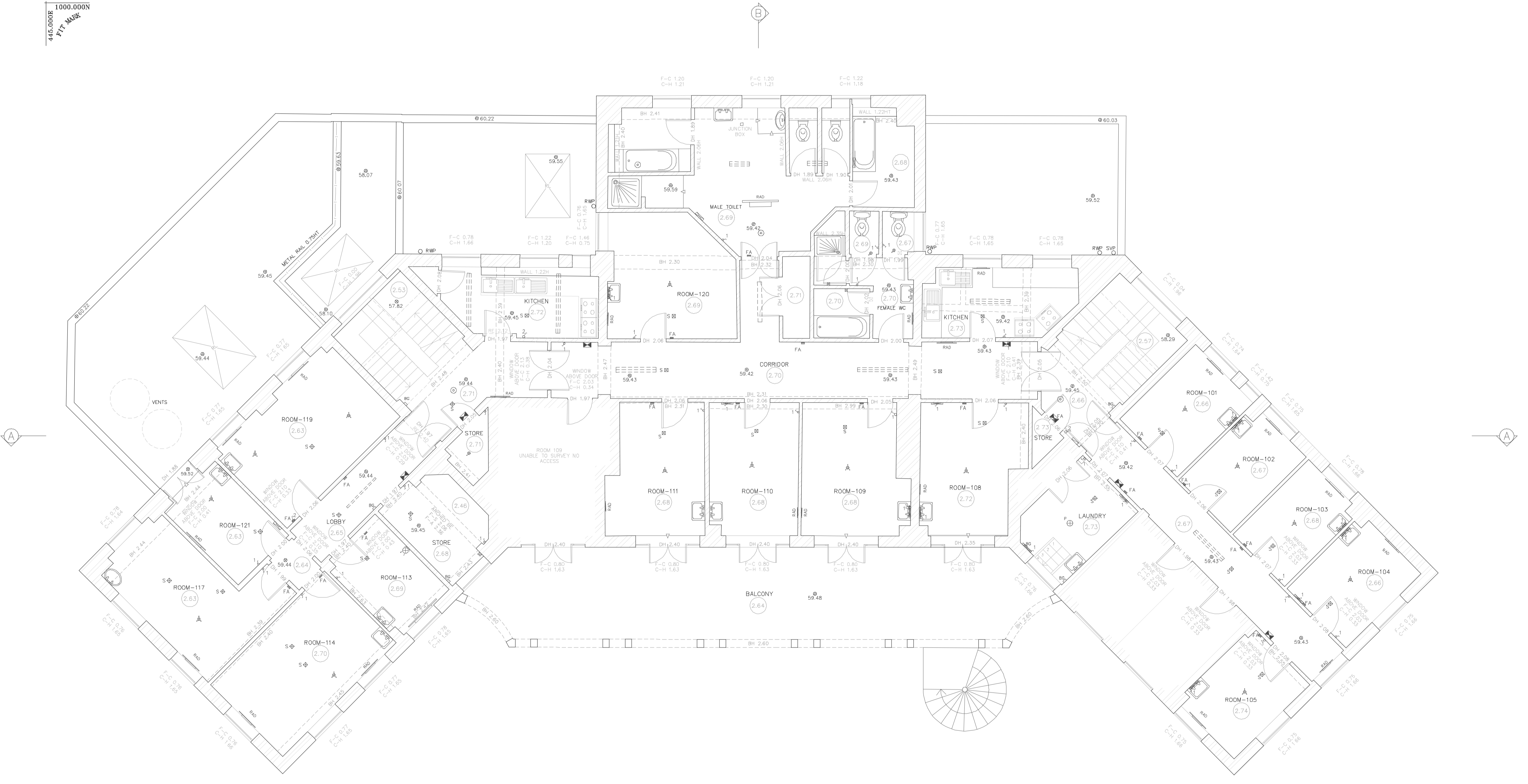
Project:
ELIZABETH HOUSE
HIGHGATE
LONDON

Drawing Title:
EXISTING SECTION
A-A AND B-B

Date:	Scale:	Surveyor:	Drawn:	Checked:
JUL 07	1:100@A1	GT	GT	ABA
Job No:	Drawing No:	Sheet No:	Rev:	
07071	07071-13-S-GA	9 of 9		

ELECTRICAL SYMBOLS	FIRE SYSTEM SYMBOLS	LIGHTING SYMBOLS
Single Pole Switch Two Pole Switch, Two Way Thermostat Electricity Meter Gas Meter Water Meter Fuse Box	Mains Circuit/Overhead Service Detector FA Fire Alarm Sounder BG Break Glass Detector FB Fire Basket FE Fire Extinguisher	Recessed Luminaire Galling Luminaire Wall Luminaire Multi Directional Spotlight Double Enclosed Fluorescent Fluorescent Wall Light Emergency Lighting Emergency Exit Signage

NOTE: ELECTRICAL, LIGHTING, FIRE & MISC SERVICES ARE BASED ON VISUAL INSPECTION ONLY, WITH ASSUMED LOCATION INDICATED ON DRAWING



1:100.000
1" = 10.000m

1:100.000
1" = 10.000m

